



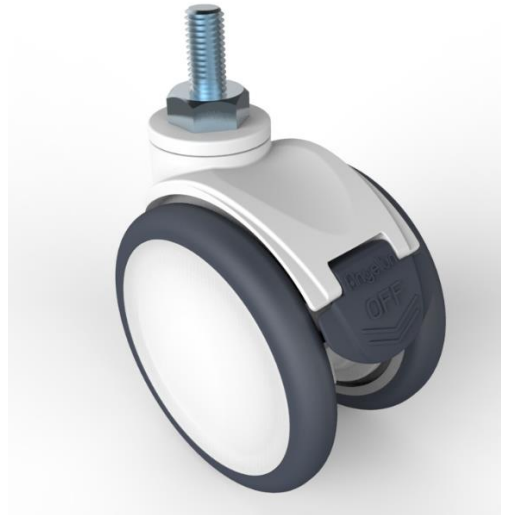
Specification

RD-100B-WG-M12X25
100mm Double wheel caster, threaded stem

This model without brake , fix by threaded stem

The main frame of caster is made of PA6 nylon, and the core of caster is made of PP material and TPE material with outstanding cushioning performance are used for wheel surface.

The inside of caster is equipped with double precision bearing, which makes the walking more stable and the braking easier.



Technical Data

| | |
|-----------------------|-----------|
| Wheel Diameter | 100mm |
| Tread Width | 13.8mm |
| Caster Width | 68mm |
| Stem diameter | M12 |
| Stem length | 25mm |
| Offset | 31mm |
| Swivel Radius | 82.5mm |
| Swivel interference | 165mm |
| Overall height | 124mm |
| Temperature | -30/+80°C |
| Standard | EN12531 |
| Weight | 0.8KG |
| Dynamic load capacity | 80KG |
| Static load capacity | 100KG |

